

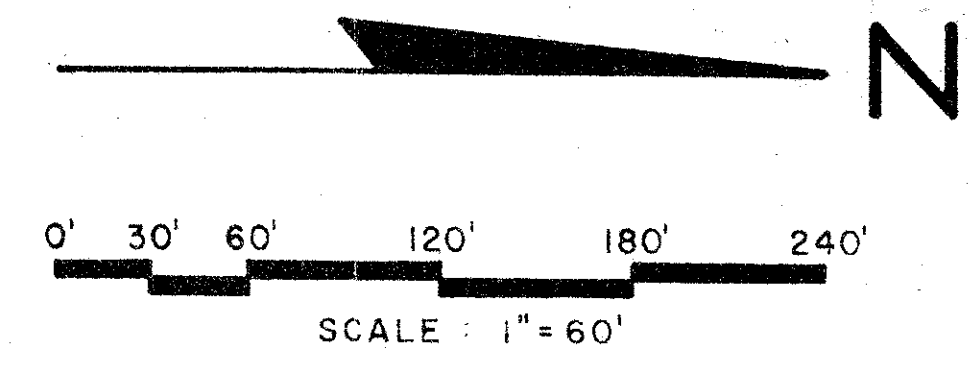
DRAWING NUMBER
54/134

REPLAT OF A PORTION OF MANOR FOREST PLAT NO. 2, A P.U.D.

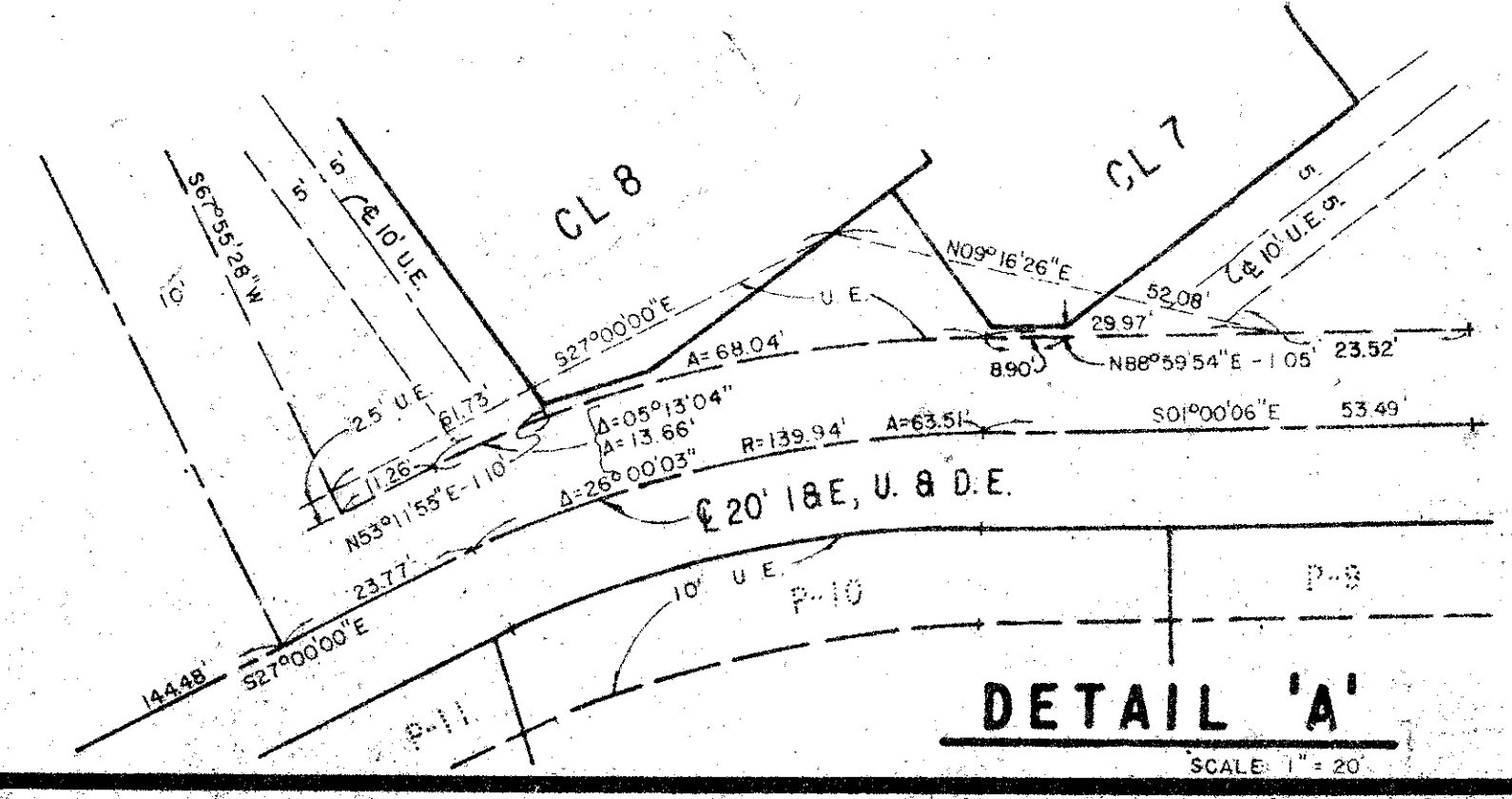
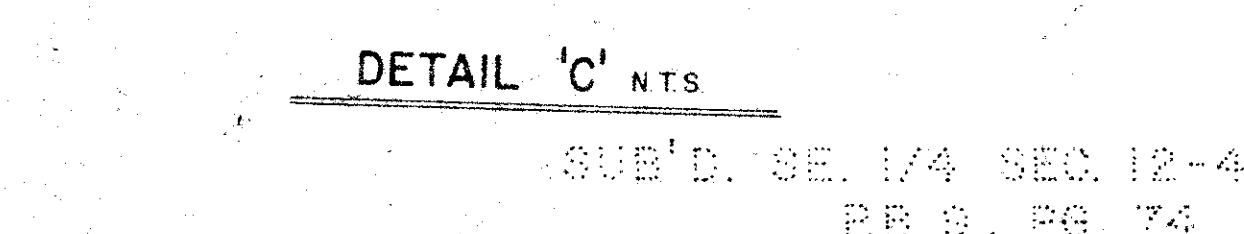
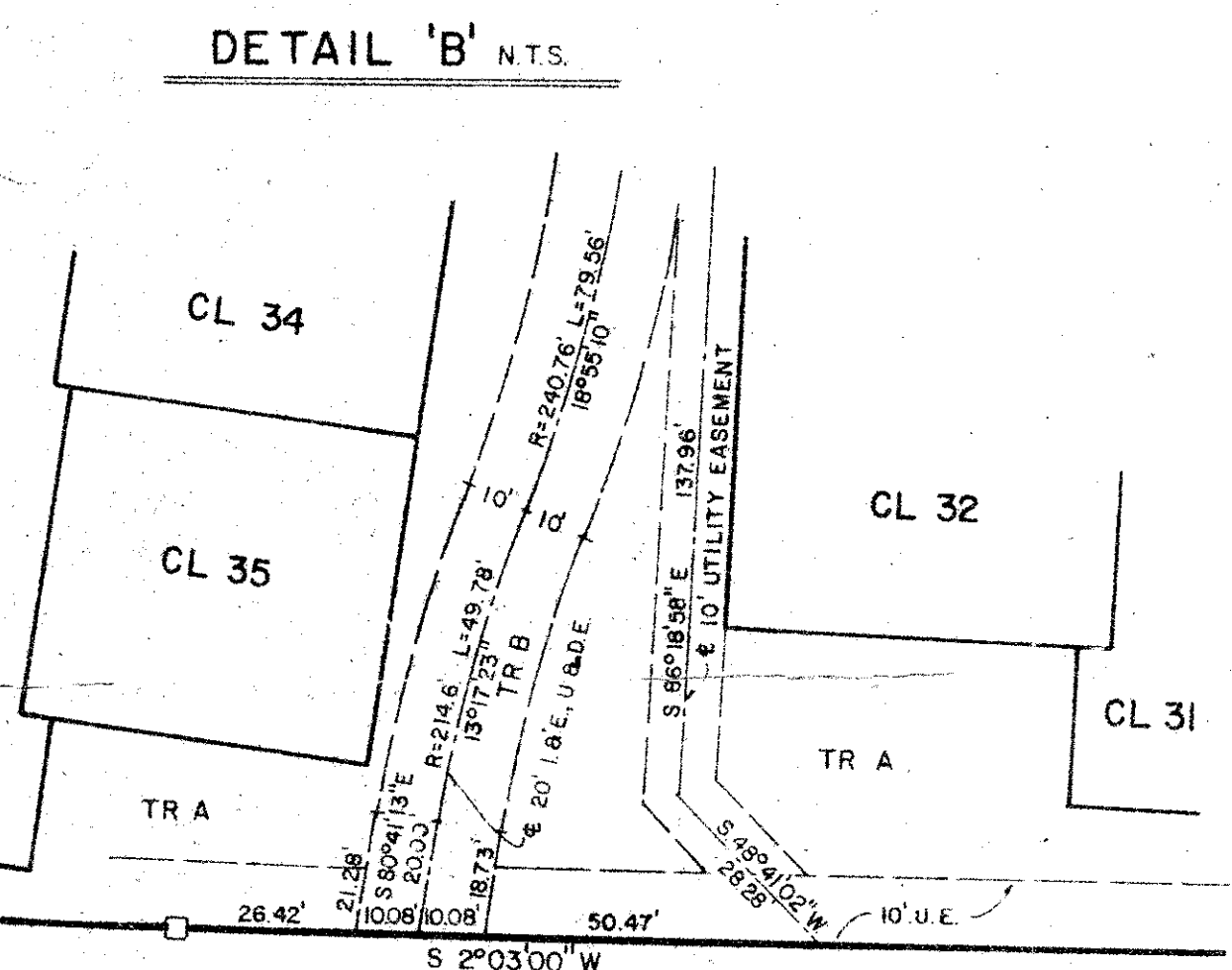
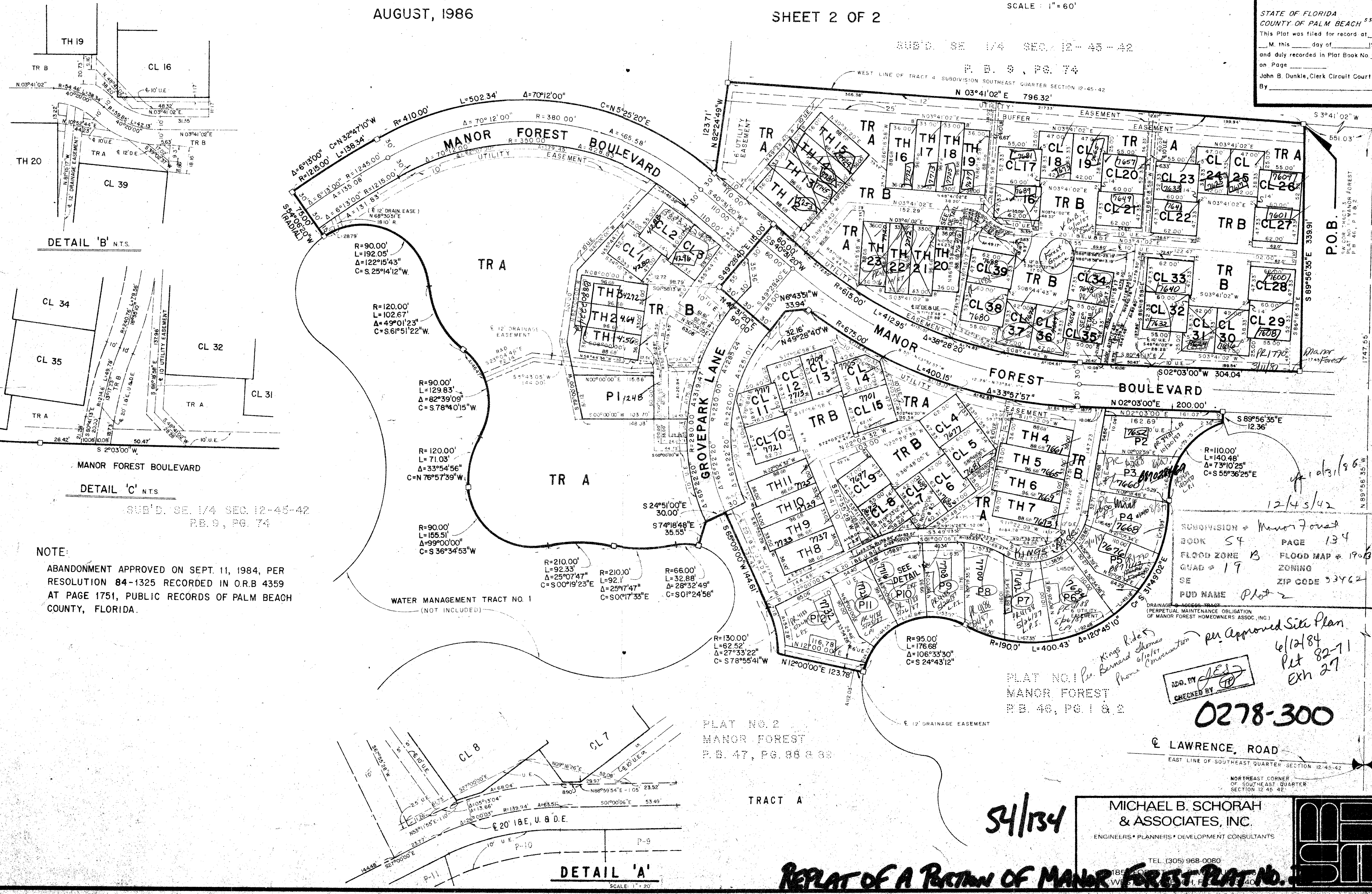
134

AUGUST, 1986

SHEET 2 OF 2



STATE OF FLORIDA
COUNTY OF PALM BEACH
This Plat was filed for record at
M. this day of 19
and duly recorded in Plat Book No.
on Page
John B. Dunkle, Clerk Circuit Court
By _____ D.C.



NOTE:
ABANDONMENT APPROVED ON SEPT. 11, 1984, PER
RESOLUTION 84-1325 RECORDED IN O.R.B 4359
AT PAGE 1751, PUBLIC RECORDS OF PALM BEACH
COUNTY, FLORIDA.

SUBDIVISION - Manor Forest
BOOK 54 PAGE 134
FLOOD ZONE B FLOOD MAP # 190B
QUAD # 19 ZONING
SE ZIP CODE 33462
PUD NAME Plat 2

PLAT NO. 1
MANOR FOREST
P.B. 46, PG. 1 & 2
ADD. BY *[Signature]*
CHECKED BY *[Signature]*
per Approved Site Plan
6/12/84
Pet 82-11
Exh 27
0278-300

MICHAEL B. SCHORAH
& ASSOCIATES, INC.
ENGINEERS • PLANNERS • DEVELOPMENT CONSULTANTS
TEL. (305) 968-0080

REPLAT OF A PORTION OF MANOR FOREST PLAT NO. 2

DRAWING NUMBER

DRAWING NUMBER

DRAWING NUMBER